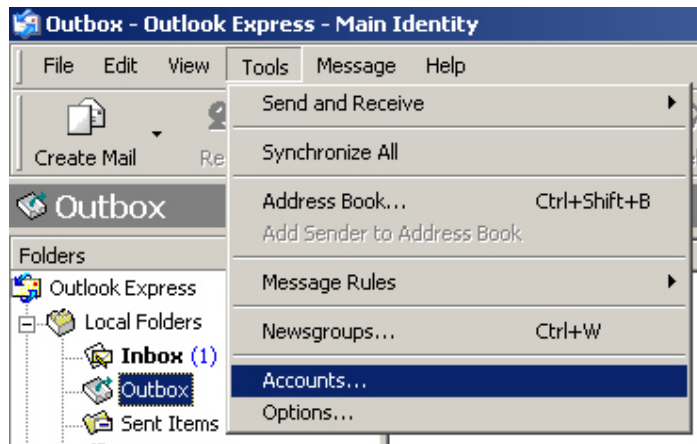


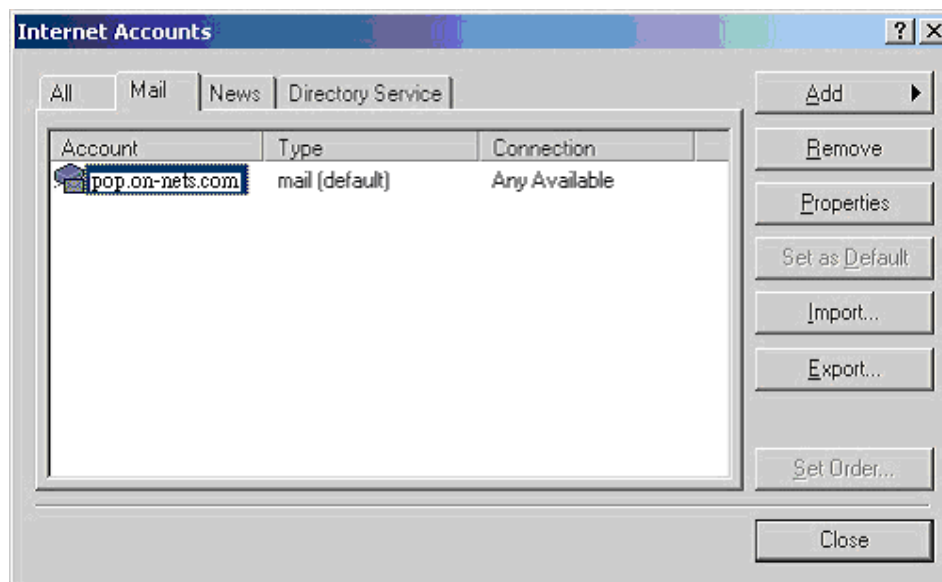
# **Authentication Setup Guide (Outlook Express 6)**

(Using HGC email server for both incoming and outgoing mail)

1. Open “Outlook Express”.
2. Select “Tools” from pull-down menu, click “Accounts”.



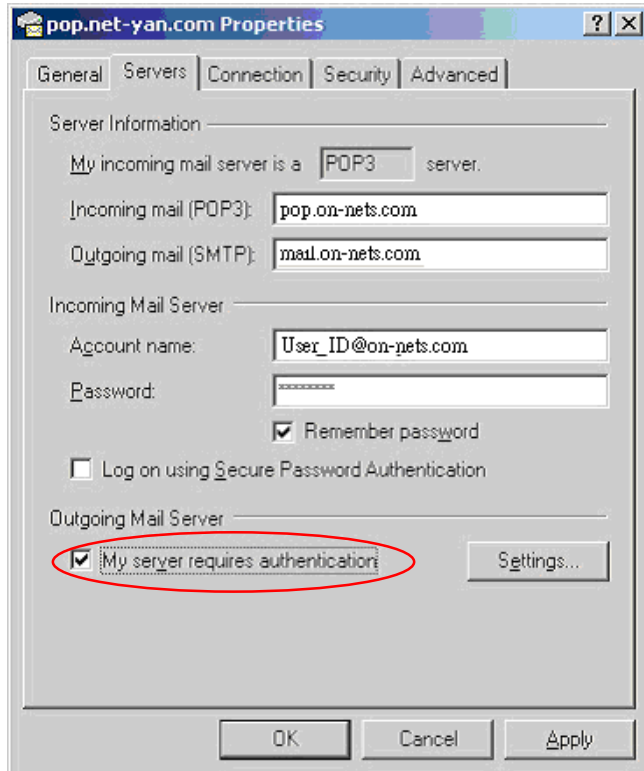
3. “Internet Accounts” window will be displayed. Double click the email account that you are currently using, in this example: “pop.on-nets.com”.



#### 4. Select “Server” tab.

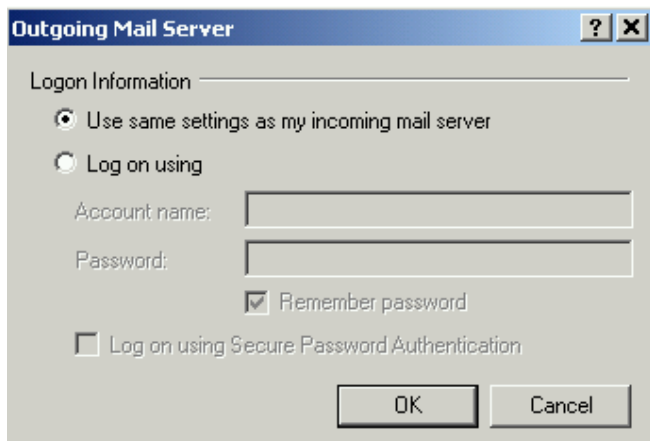
(You should find that both incoming mail (POP3) and outgoing mail (SMTP) are of the same domain: either “on-nets.com” or your own domain that is hosted at HGC.)

Click “My server requires authentication”.



#### 5. Click “Settings...” tab.

- i. Choose “Use same settings as my incoming mail server”.
- ii. Click “Remember password”. Then press “OK”.



- END -