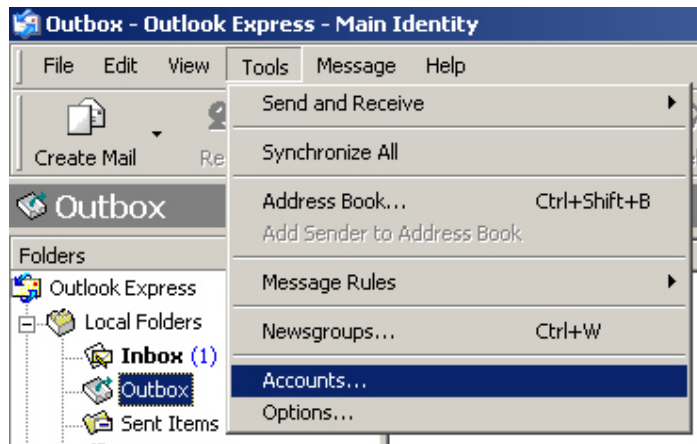


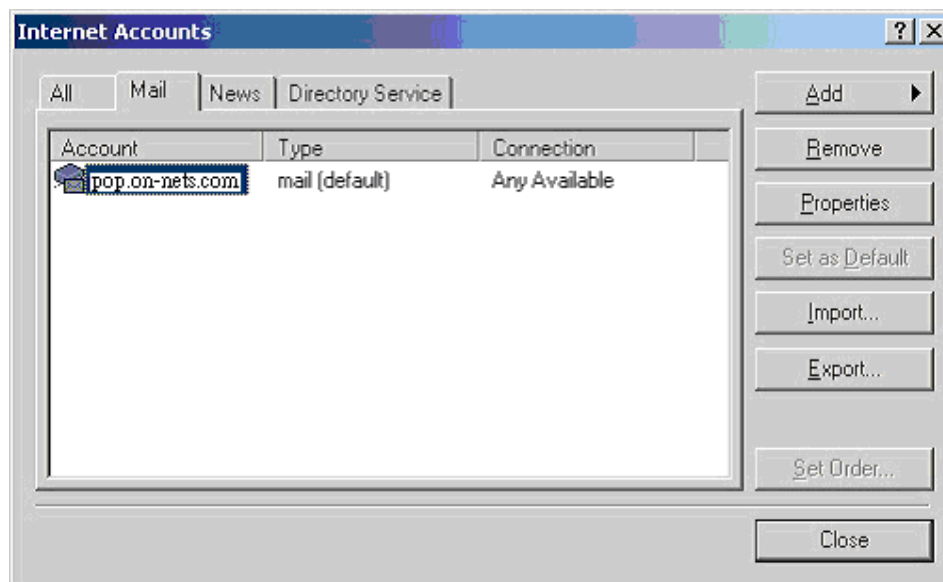
Authentication Setup Guide (Outlook Express 6)

(Using HGC email server for outgoing mail ONLY)

1. Open “Outlook Express”.
2. Select “Tools” from pull-down menu, click “Accounts”.



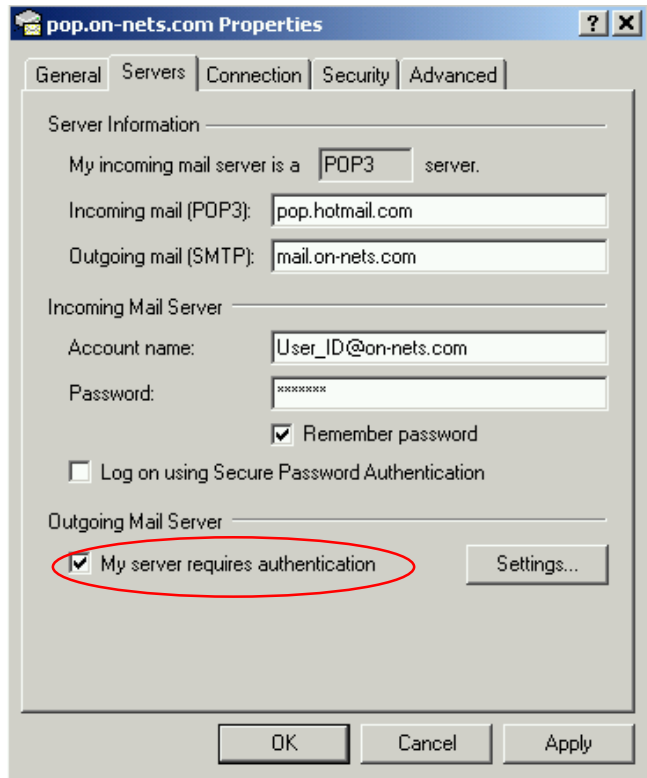
3. “Internet Accounts” window will be displayed. Double click the email account that you are currently using, in this example: “pop.on-nets.com”.



4. Select “Server” tab.

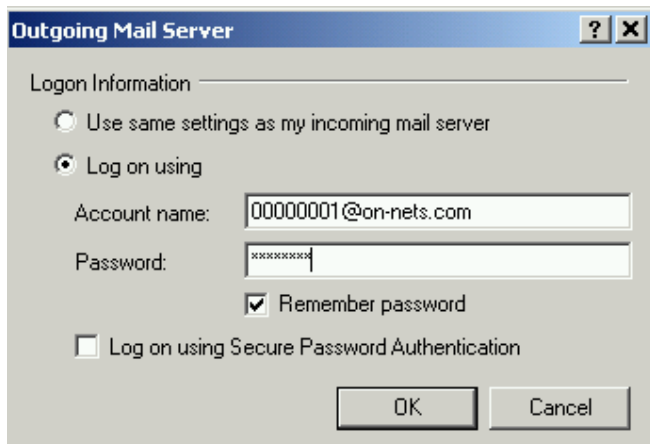
(You should find that outgoing mail (SMTP) MUST be “mail.on-nets.com” and that incoming mail (POP3) and outgoing mail (SMTP) is NOT the same. In this example, incoming mail = pop.hotmail.com.

Click “My server requires authentication”.



5. Click “Settings...” tab. Choose “Log on using”.

- i. Enter “Account Name” = circuit_no.@on-nets.com. In this example: 00000001@on-nets.com
- ii. Enter “Password” = your account number.
- iii. Click “Remember password”. Then press “OK”.



- END -